

Note: Vapor Barrier and Insulation Type/Location to be Determined by Design Professional

METROBRICK or Royal Thin Brick

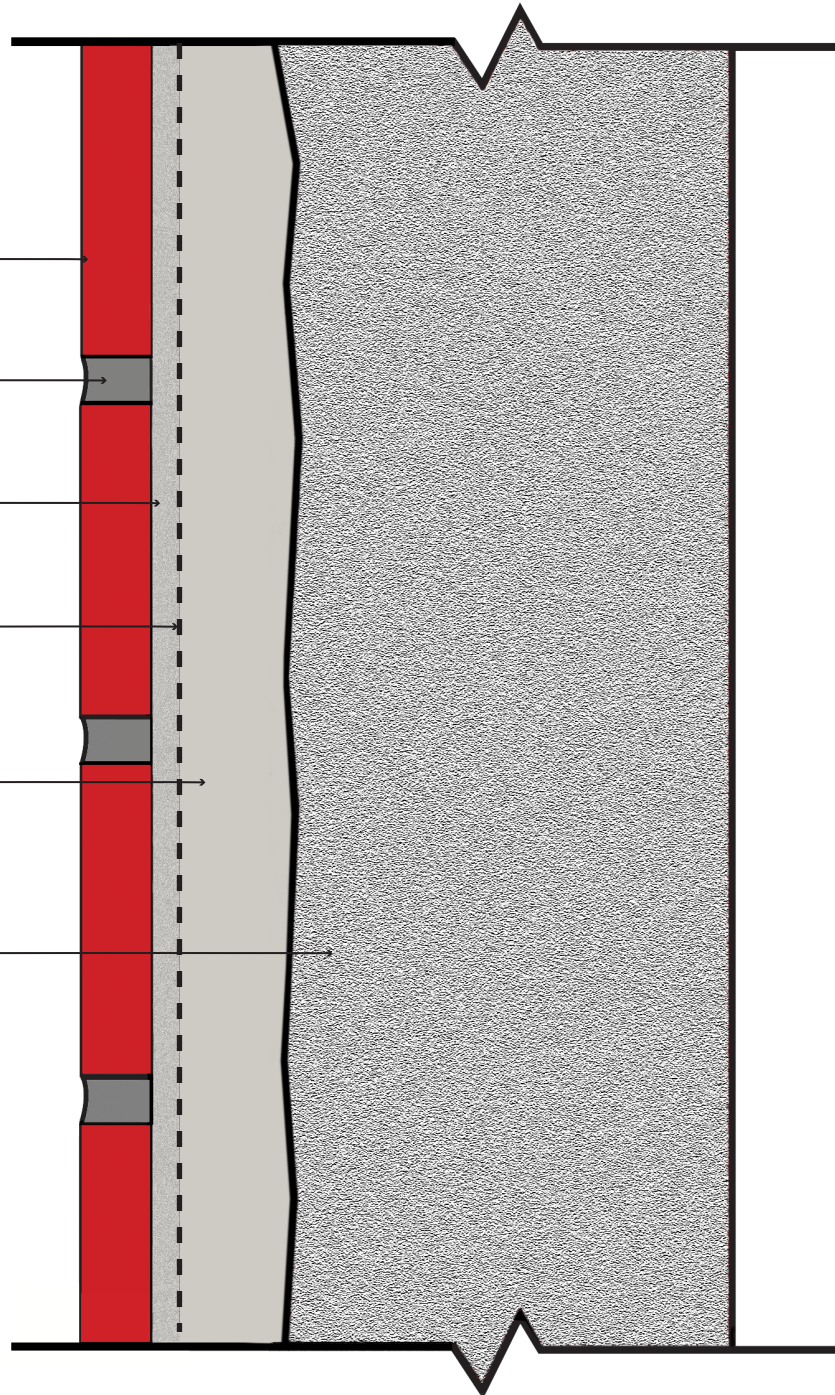
Grout

Thinset

Waterproofing Membrane

Mortar Bed

Concrete



Scale: N.T.S.

©2019 METROBRICK®

Note: Detail drawing for reference only.

METROBRICK Architectural Thin Brick should be installed according to the Tile Council of North America Standards, ANSI standards and local building codes. Use only reputable installers and the correct installation products to suite the application. Vapor barrier and insulation type/location to be determined by a design professional. METROBRICK accepts no liability for the end use of this detail.